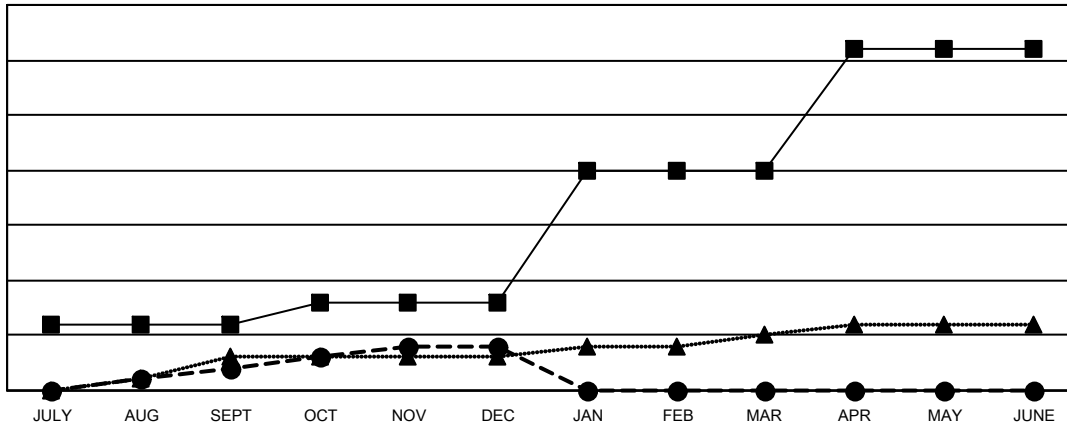




Clubs			
RESULTS FOR 2023-2024			
QUARTER	NEW CLUB GOAL	NEW CLUBS	DROPPED CLUBS
JULY/AUG/SEPT	6	2	4
OCT/NOV/DEC	2	2	22
JAN/FEB/MAR	12	0	0
APR/MAY/JUNE	11	0	0

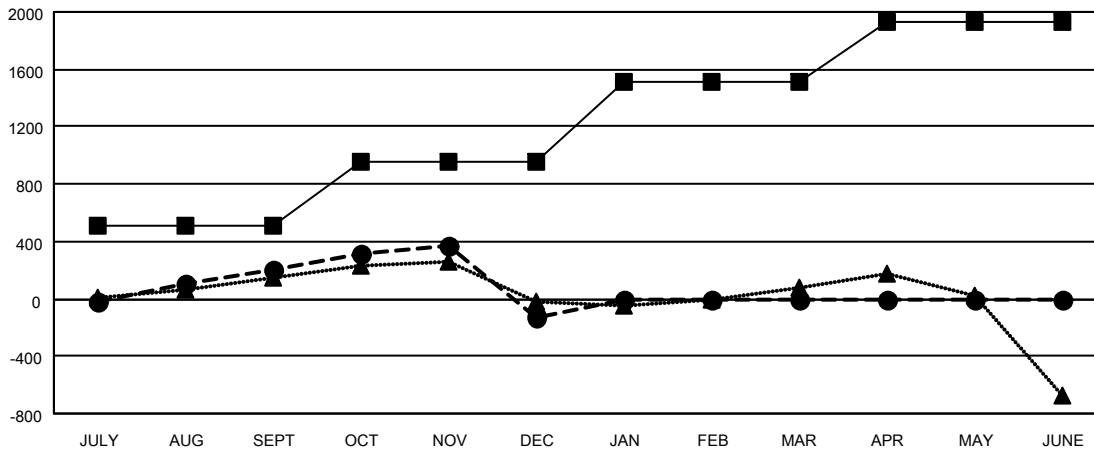
Members			
RESULTS FOR 2023-2024			
QUARTER	MEMBER GROWTH NET GOAL	MEMBER GROWTH ACTUAL	DROPPED MEMBERS ACTUAL (including transfers)
JULY/AUG/SEPT	505	970	667
OCT/NOV/DEC	450	614	890
JAN/FEB/MAR	554	0	0
APR/MAY/JUNE	423	0	0

GOALS AND ACTUAL NEW CLUBS CUMULATIVE



- - CURRENT YEAR GOALS FOR NEW CLUBS
- - CURRENT YEAR ACTUAL NEW CLUBS
- ▲ - LAST YEAR ACTUAL NEW CLUBS

GOALS AND ACTUAL MEMBERS CUMULATIVE



- - MEMBER GROWTH NET GOAL
- - MEMBER GROWTH ACTUAL
- ▲ - LAST YEAR MEMBERSHIP ACTUAL

DROPPED CLUBS: 26	326 CLUBS OF 663 ADDED 1 OR MORE NEW MEMBERS	GENDER DISTRIBUTION MALE 10,130 (57.48%) FEMALE 7,492 (42.52%)
DROPPED MEMBERS DECEASED 118 CLUB CANCELLED 211 OTHER 1,230 TOTAL 1,559	CLICK HERE FOR CUMULATIVE MEMBERSHIP DATA	TOTAL FAMILY UNIT MEMBERS 3,284 FAMILY MEMBERS PAYING HALF DUES 1,755